



# Leaf Scorching due to Foliar Application of Synthetic Acid Mine Drainage and the Effectiveness of an Antitranspirant in Protecting Leaves

Mzwandile Mabuza<sup>1</sup> · John Annandale<sup>1</sup> · Martin Steyn<sup>1</sup> · Phil Tanner<sup>1</sup>

Received: 21 May 2022 / Accepted: 20 January 2023 / Published online: 9 February 2023  
© The Author(s) under exclusive licence to International Mine Water Association 2023

## Abstract

Untreated acid mine drainage (AMD) is being considered for crop irrigation on strategically limed soils, but foliar scorching is of potential concern. To test whether crops might be protected by antitranspirants, a field trial and two glasshouse pot trials were undertaken during the 2020/2021 growing seasons. Crops, namely *Sorghum bicolor*, *Zea mays*, *Glycine max*, *Vigna unguiculata*, *Triticum aestivum*, *Avena sativa*, *Medicago sativa*, and *Pisum sativum*, were exposed to acid water with pH levels of 2.0, 2.5, 3.0, 4.0, and 7.0. The first pot trial and field trial tested the effects of sulphuric acid solutions (to simulate AMD) on leaf scorching and the second pot trial focused on the effectiveness of an antitranspirant, Wiltpruf<sup>®</sup>, in protecting crops against leaf scorching. Leaf scorching occurred at pH levels of 2.0, 2.5, and 3, but only to a maximum of 6% leaf area damage in the worst-affected crop species. Crops are likely to recover from this injury. Contrary to expectations, the antitranspirant increased the propensity for foliar injury among crops, especially at pH 2.0 and 2.5. Metal cations commonly found in AMD should be included in follow-up leaf scorching studies to better simulate likely AMD irrigation waters. However, it appears that any crop growth problems possibly encountered when irrigating with AMD are likely to stem from root zone effects.

**Keywords** Acidic waters · AMD · Foliar injury · pH levels · Wiltpruf<sup>®</sup>

## Introduction

The mining industry's greatest source of environmental concern is acidic mine drainage (AMD) (Kumari et al. 2010). AMD is caused by the exposure of tailings and overburden to air and water. AMD is created by the oxidation of pyrite (FeS<sub>2</sub>) and needs to be neutralized before being released into the environment (Jovanovic et al. 2004). The use of untreated AMD for irrigation may lead to inhospitable conditions for plant growth, especially for non-acidophilic crops. AMD also causes excessive loading and mobilization of Fe, Al, and Mn. Nonetheless, there are several factors to consider that influence the degree to which such water qualities may negatively influence crop growth. These include

crop management, choice of irrigation system, crop tolerance, and the soil's chemical properties.

Most studies have focused on studying the impacts of acid rain on crop plants. Information on the use of untreated AMD for crop irrigation could not be found. AMD is typically neutralized with lime in a high-density sludge (HDS) plant prior to release to the environment or further treatment. The possibility of irrigating crops directly with acid mine drainage, on soils that are strategically limed, has been identified as a potentially fruitful endeavor (Madiseng 2018). One of the questions that arise when considering this unusual practice is whether or not crop foliage will be scorched by overhead irrigation, thereby reducing photosynthetic leaf area, and reducing production to below economic levels. However, as a first step, special attention was given to the quantification of the degree of leaf scorching due to the free proton acidity of AMD. Future trials are planned that will focus on irrigation with acidic water enriched with metal cations to more closely simulate actual AMD, which could not be sourced directly from the dam due to variability in mine water data from the dam.

✉ Mzwandile Mabuza  
mzwandilechuster@gmail.com

<sup>1</sup> Department of Plant and Soil Sciences, University of Pretoria, Private Bag X20 Hatfield, Pretoria 0028, South Africa

Leaf scorching from acidic waters begins with the erosion of the epicuticular wax in leaves (Percy and Baker 1987). Similar to other biological structures, cuticles vary between species and between individuals, and are influenced by the environments in which the plant grows. According to Sun et al. (2016), when acid rain has a pH below 3.0, it damages plant cuticles, leading to blade chlorosis. Acid rain results in premature defoliation or aging of plants, necrotic patches in their tissues, and other obvious signs when the pH falls below 3.0. Generally, stomatal damage reduces photosynthetic rates, which hinder plant development and productivity. In addition, acid rain can weaken or completely damage chloroplast structures, which affects some chloroplast activities including photosynthesis. Acid rain-induced impairments in photosynthetic capability lead to lower biomass production in crop species (Sant'Anna-Santos et al. 2006). According to Shi et al. (2021), acid rain can directly reduce the amount of chlorophyll in leaves by 6.7% for every pH unit. Previous studies (Jacobson et al. 1989; Keevar and Jacobson 1983) revealed that crops are most vulnerable to acid scorching in the early stages of growth. We hypothesized that antitranspirants could potentially contribute to reducing foliar injury associated with the use of AMD as irrigation water.

Antitranspirants are categorized into four classes based on their mode of action: (1) reflectants, which reduce leaf temperature and transpiration rates by reducing the absorption of radiant energy from the sun; (2) wax forming materials, which are emulsions of plastic or latex but mostly wax, that form a thin transparent film on the leaf surface, preventing the loss of water vapour from leaves; (3) metabolic antitranspirants, which are chemical compounds that can regulate the opening and closing of stomata by controlling the movement of guard cells, thus reducing the loss of water vapour, and; (4) growth suppressants, which are chemicals that retard the growth of plants while enhancing their tolerance to extreme weather conditions (Aggag et al. 2015; Guleria and Shweta 2020). In this study, Wiltpruf<sup>®</sup>, which belongs to the wax-forming group of materials, was used as it was expected to offer some protection from the acidic water. Wiltpruf<sup>®</sup> is made of natural ingredients like pine oil. When sprayed on crops, it leaves a thin, waxy film over the tiny pores on the surface of the plant's leaves or needles, effectively sealing them off and keeping any moisture inside them from evaporating (Cinque 1979). Carbon dioxide passes into the leaf through the lower epidermis (Kumari and Chauhan 2017). Antitranspirants like Wiltpruf<sup>®</sup> are primarily formulated to help prevent winter scorch, dieback, and foliage browning on most evergreen plants (Windish 2016). The application of antitranspirants has been found to prevent and/or reduce transplant shock in young plants. Information on the effect of stress on cuticular waxes and

how these protect foliage against the deleterious effects of light, temperature, osmotic stress, physical damage, altitude, and pollution has been documented (Shepherds and Griffiths 2006).

Rodríguez-Sánchez et al. (2020) worked with simulated acid rain and identified damaged leaf regions by gray or brown flecking and localized chlorosis and necrosis. These authors quantified foliar injury by visually estimating scorched leaf patches as a percentage of the total leaf area. However, in the present study, a more objective, quantitative approach was employed using ImageJ, which requires standard conditions to take photographs of plants without the need for a pure white or black background as is required with other similar image processing software packages. It also allows for manual selection of specific colours for analysis (Schneider et al. 2012). ImageJ is freely available and easy to use.

Evaluated in these trials were four summer crops consisting of two dicots and two monocots. Likewise, four winter crops also consisting of two dicots and two monocots were selected for the antitranspirant trial. These crops were selected based on their popularity among South African farmers and to assess possible variations in leaf scorching between monocots and dicots.

To examine the potential effects of AMD on foliar damage, three consecutive experiments were carried out with varying AMD pH levels to address three questions: (1) Does AMD cause foliar injury in field planted crops; (2) Does AMD cause foliar injury in glasshouse planted seedlings, and; (3) whether Wiltpruf<sup>®</sup>, an antitranspirant, is effective in protecting leaves against foliar scorching from AMD. We hypothesized that increasing acidity would not result in foliar injury until a threshold was exceeded and that the use of Wiltpruf<sup>®</sup> would result in reduced scorching due to enhanced wax coverage on the leaf surfaces.

## Materials and Methods

### Location of the Study

This study was carried out during the 2020/2021 season at the University of Pretoria, Innovation Africa Farm, South Africa. It involved a field trial and two glasshouse pot trials. Acid mine waters were synthesized in the Soil Science Laboratory of the University of Pretoria. Sulphuric acid (98%) was used as the source of acidity because most acidic mine waters are dominated by sulphates. Sulphuric acid was used without the acid-generating cations commonly found in AMD (Fe, Al, and Mn), as these are expected to be less important from a scorching point of view due to the relatively slow kinetics of their oxidation in water.

## Experimental Design

The trials were laid out in a split-plot design with three replicates. Five pH levels were selected as main plots for the pot trials, while crop species formed subplots. Each main plot was represented by four pots while subplots were represented by one pot. Four summer crops selected for the field and first pot trial consisted of two monocotyledonous crops; sorghum (*Sorghum bicolor* L.) and maize (*Zea mays* L.) and two dicotyledonous crops; soybean (*Glycine max* L.) and cowpeas (*Vigna unguiculata* L.). The antitranspirant pot trial was carried out in winter, hence wheat (*Triticum aestivum* L.), oats (*Avena sativa* L.), lucerne (*Medicago sativa* L.), and field peas (*Pisum sativum* L.) were selected to also represent monocotyledonous and dicotyledonous crops.

## Experiment 1. Response of Field Planted Crops to Foliar Wetting with AMD

### Methodology

Land preparation was undertaken through a tractor-drawn plough, which was followed by disc-harrowing as the last step to prepare a fine seedbed. The soil had a sandy loam texture and classified as a deep Hutton loamy, kaolinitic, mesic, typic, highly weathered soil (Soil Classification Working Group 1991). The pH (CaCl) of this soil was 5.5 and no lime was added. The trial evaluated four pH levels of foliage wetting: 2.0, 3.0, 4.0, and 7.0 (control) as main plot treatments with three replicates, giving a total of 12 plots, each measuring 20 m by 3.4 m. These were further divided into four sub-plots each measuring 4 m by 2.4 m with borders between them. The four crops were assigned randomly to subplots. Maize and sorghum were planted in 0.8 m rows with 0.25 m between maize plants and 0.2 m for sorghum. Sorghum was planted with three seeds per planting position. Both cowpeas and soybean were planted in rows of 0.6 m by 0.15 m. Due to the non-availability of an irrigation system at the time of planting, fertilizer was applied after crop emergence to avoid fertilizer burn. A week after emergence, fertilizer was applied using the dollop method (Edje and Ossom 2009). Maize and sorghum received the recommended amounts of nitrogen (100 kg/ha), phosphorus (40 kg/ha) and potassium (40 kg/ha). Cowpeas and soybean also received similar amounts, but nitrogen was halved, as these are leguminous crops.

Soybean failed to germinate due to a dry spell at the emergence stage. Replanting was done after the irrigation system was set up. However, the crop did not emerge again following failure of the water pump at the farm which coincided with another dry spell. With soybean, soil surface wetting is critical for germination. Soybeans were,

therefore, eliminated from the trial. The other crops were able to germinate since they are not as badly hindered by a hard soil crust during emergence. Supplemental irrigation commenced after the pump was repaired at three weeks after emergence. Foliar spraying with simulated AMD was done on alternate days beginning 14 days after crop emergence. A hand-held sprayer was used to ensure that all leaves were adequately wetted to just below the point of run-off. All crops were irrigated 10 mm with borehole water every third day in the absence of rainfall. Weeds were controlled through hand-hoeing. The trial was terminated ten weeks after planting.

### Data Collected

To collect plant data, five plants were selected per plot on which crop growth and canopy-related data (number of scorched leaves per plant and fractional areal foliar damage) were measured on a weekly basis. Chlorophyll content was indirectly determined using a SPAD-502 Plus chlorophyll meter (Konica Minolta 2017) at the end of the experiment. Dry mass was also determined at the end of the experiment with five plants cut off at ground level and oven-dried at 65 °C until constant mass.

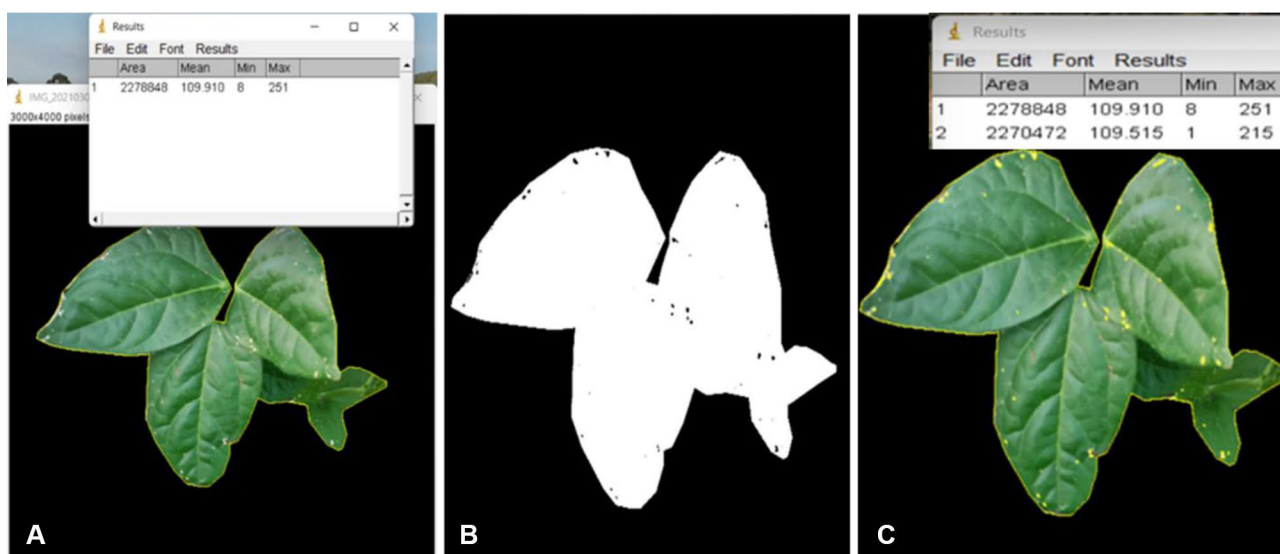
Every second day after treatment commenced, crops were inspected for the inception of scorching. Crops were visually assessed for symptoms of foliar injury. If there were noticeable symptoms of scorching, the control crops were checked for similar symptoms. If the control crops did not display similar symptoms, the symptom was attributed to the water quality sprinkled on leaves. Damaged/scorched leaves were photographed, and images were imported into ImageJ to determine fractional leaf area damage (Fig. 1; Alheeti et al. 2021).

### Data Analysis

Data collected were subjected to statistical analysis using Microsoft Excel and R Statistical software, version 2.15.3 (R Core Team 2013). Separation of means of significant variables was assessed with the DNMRT least significant difference (LSD) test at a 95% probability level ( $P < 0.05$ ).

## Results from Experiment 1

There were no significant differences in dry mass (Table 1) and chlorophyll content (Table 2) across the different pH levels in the field trial. The failure of acid waters to negatively affect dry mass production may be due to crops having developed somewhat hydrophobic leaf surfaces and possibly



**Fig. 1** Calculating injured leaf area using ImageJ, **A** measuring total leaf area, **B** deselecting injured leaf area and **C** measuring remaining leaf area

**Table 1** Above-ground dry mass (kg/ha) of crops sprayed with acid mine waters of different pH levels

pH	Crop		
	Maize	Sorghum	Cowpeas
pH 2	4431	5562	3126
pH 3	5050	5833	2737
pH 4	5533	7577	2637
pH 7	4683	6071	2658
Significance	ns	ns	ns

ns non-significant at  $P=0.05$

**Table 2** Chlorophyll content (SPAD units) of crops sprayed with synthetic acid mine waters of different pH levels

pH	Crop		
	Maize	Sorghum	Cowpeas
pH 2	51.4	45.8	50.9
pH 3	53.2	46.7	51.5
pH 4	54.8	51.9	49.6
pH 7	56.0	50.5	48.5
Significance	ns	ns	ns

ns non-significant at  $P=0.05$

quite high epicuticular wax concentrations. No foliar injury was evident either. This is an indication that the yield would most likely not have been reduced in these crops had they been grown to maturity.

## Experiment 2. Glasshouse Leaf Scorching Trial

It was noteworthy that no leaf scorching was apparent in the field trial, possibly because the crops were already quite well established before foliar treatments were initiated. For this reason, a pot trial was established to ascertain whether young seedlings would be more susceptible to foliar scorching.

### Methodology

Tapered flowerpots (6 L by volume) with a top diameter of 22 cm, a height of 22 cm, and a base diameter of 18 cm were filled with soil and coir in the ratio of 5:1. The coir assisted with free drainage. The soils and fertilizers used were described earlier. The main plots comprised foliage wetting with water at five different pH levels [2, 2.5, 3, 4, and 7 (control)]. Each pot had one of the crops under investigation. These were replicated three times and five seeds were planted per pot.

Domestic tap water was used for irrigation for the duration of the trial. Crops were irrigated to field capacity once a week after emergence. Irrigation frequency was gradually increased as their water demand increased with growth. Before each irrigation, pots were weighed to determine the amount of water depleted. Irrigation water was applied to the soil surface using a beaker to avoid wetting the foliage. All treatments were allowed to drain freely.

Beginning seven days after crop emergence, simulated acid mine drainage was sprayed daily onto the leaves with a spray bottle. This wetting frequency was selected to increase the chances of scorching foliage. The leaves were sprayed to

just below the point of runoff. To eliminate acid drip into the growth media when spraying foliage, the soil was covered with plastic discs. The plastic was sliced to allow plants to grow through them and was not removed during irrigation as the water was able to seep past the sides. Leaf wetting with simulated acid waters continued until the trial was terminated five weeks after crop emergence.

## Data Collection and Analysis

Data on fractional foliar damage were collected beginning 14 days after planting. Chlorophyll content was measured at the end of the trial using a SPAD-502 Plus chlorophyll meter (Konica Minolta 2017). Destructive sampling was done at the end of the experiment for dry mass determination. Three plants were cut off at ground level and oven-dried at 65 °C until a constant mass was achieved. Leaf scorching data was collected as outlined in the field trial section. Data were analysed as stated for the field trial.

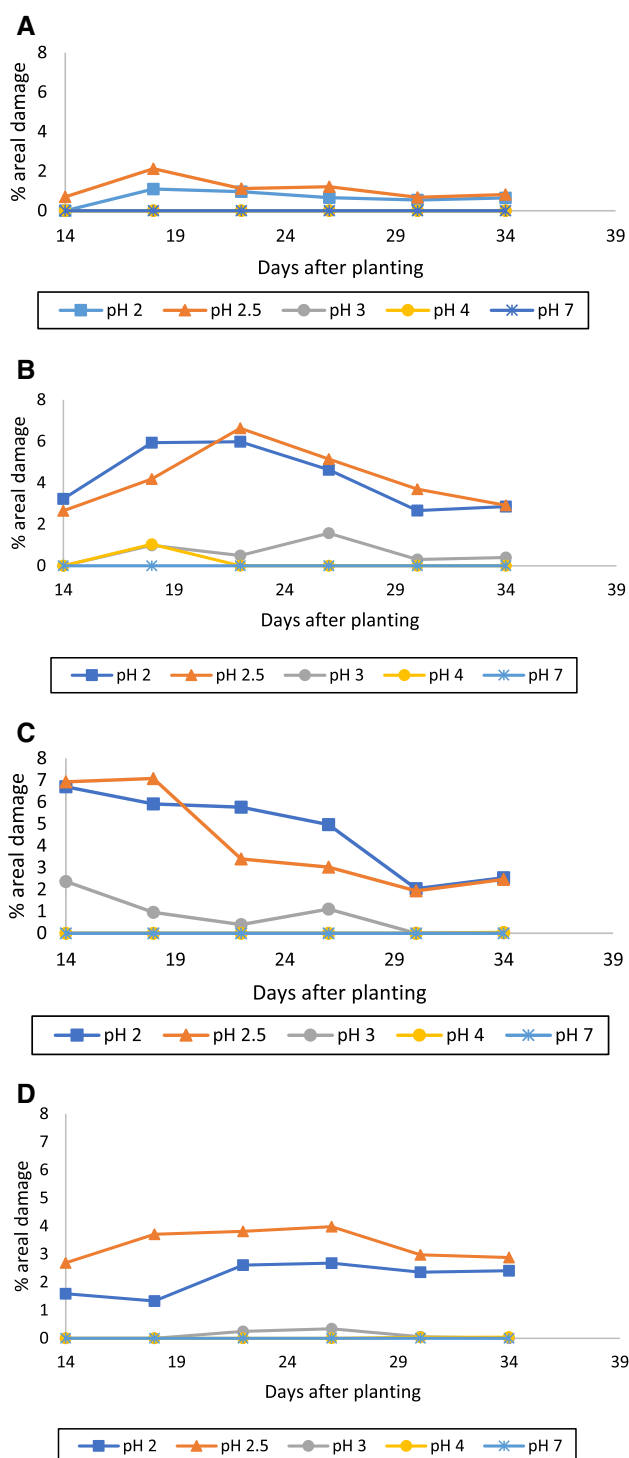
## Results from Experiment 2

### Fractional Leaf Area Damage

There was a significant ( $P < 0.05$ ) difference in areal foliar injury assessed among the different crops (Fig. 2). Cowpeas initially exhibited significantly ( $P < 0.05$ ) higher injury, while sorghum had significantly greater injury than the other crops from 18 to 24 days after planting. It can be noted for sorghum and cowpeas that damage declined after a few weeks, partly due to cessation of lesion development in the older leaves and because the initial scorched area became a small fraction of total leaf area as new leaves emerged. Limited chlorosis and necrosis was observed on the injured leaves, and this was accompanied by some leaf curling in soybean (Fig. 3). It was noteworthy that both maize and cowpeas had their peak areal damage at pH 2.5. However, this was still very low at only 2% and 4% damage, respectively.

### Chlorophyll Content and Dry Mass

As was the case with the field trial, no significant differences were noted in chlorophyll content in the glasshouse trial (Fig. 4). Dry mass within each crop also shows that pH levels did not significantly affect dry mass per plant. Though not significant, maize dry mass showed a decreasing trend from pH 7.0 down to 2.0 (Fig. 5).



**Fig. 2** Fractional leaf area damage (%) calculated using ImageJ for **A** maize **B** sorghum **C** cowpeas and **D** soybeans sprayed with synthetic acid mine water of pH 2, 2.5, 3, 4, and 7

## Experiment 3. Antitranspirant Glasshouse Trial

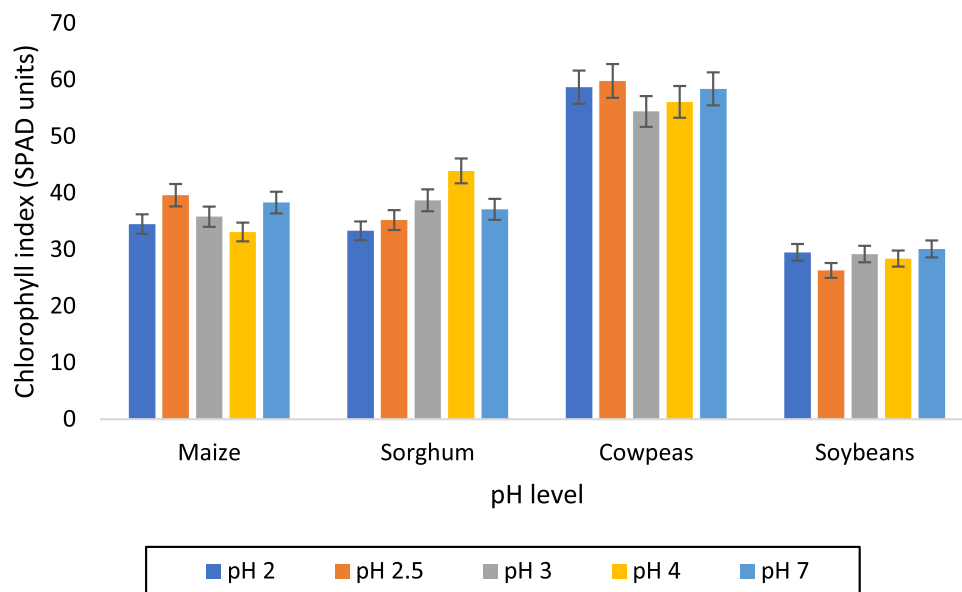
Since it was apparent that foliage scorching occurred in



**Fig. 3** Scorched leaves for **A** maize, **B** cowpeas, **C** soybean, and **D** sorghum at 20 days after planting following wetting with synthetic acid mine water at pH 2



**Fig. 4** Chlorophyll content (SPAD units) at the termination of the experiment for crops wetted with synthetic acid mine drainage. Error bars indicate statistical significance at  $P < 0.05$

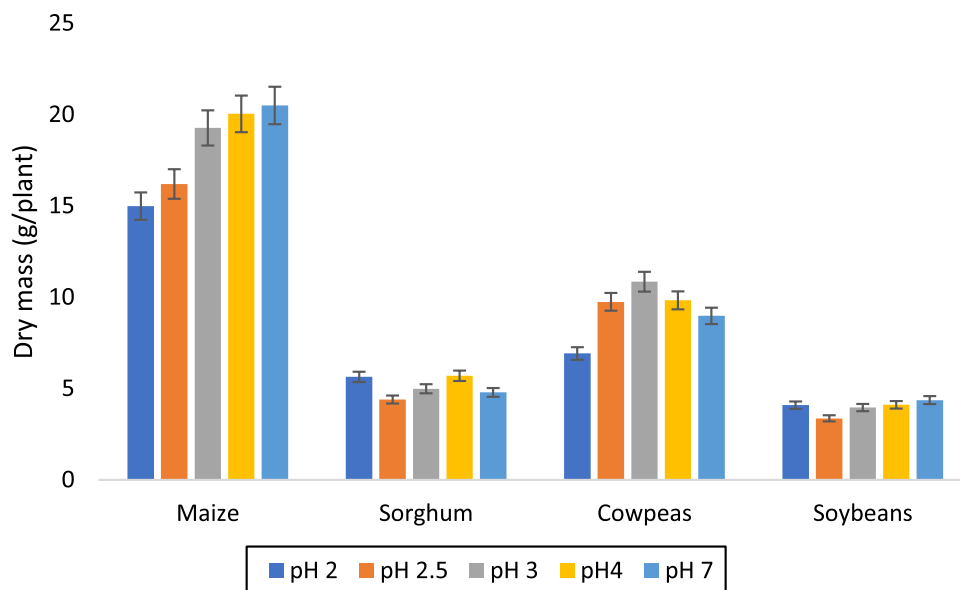


the early stages of crop growth, the antitranspirant study was undertaken to protect crops at their early and vulnerable growth stages against foliar scorching from acid mine waters.

## Methodology

All agronomic practices and pH treatments were as outlined above. Crops were sprayed with Wiltpruf®, a ready-to-use

**Fig. 5** Total above-ground dry mass (g/pot) at the termination of the experiment for the four crops grown in the glasshouse trial as a function of simulated AMD. Error bars indicate statistical significance at  $P < 0.05$



antitranspirant one week after emergence until just before the point of run-off. Two days later, crops were then sprayed daily with their respective acidity treatments. Data were collected and analysed as outlined above.

## Results from Experiment 3

### Fractional Leaf Area Damage

It emerged in this study that the use of the antitranspirant increased the propensity for leaf scorching. Wheat plants treated with Wiltpruf® had their highest injury of 7.2% at pH 2, while it was only 4.78% at pH 2.5 in the absence of Wiltpruf®. This was at 28 days after planting. As time progressed, the percentage of injured leaf area increased and then decreased again (Fig. 6). A similar trend was noted in oats (Fig. 7), where it is evident that higher injury was realized in the presence of Wiltpruf®. Less than 0.2% areal injury was recorded at pH 3 where Wiltpruf® was applied. No injuries were recorded at pH 3 without Wiltpruf®. Calculated areal injury for lucerne is shown in Fig. 8, where it is also demonstrated that the antitranspirant increased the occurrence of leaf scorching with a significantly ( $P < 0.05$ ) higher injury percentage (7.2%) recorded 28 days after planting. No scorching was observed for field peas.

### Dry Mass and Chlorophyll Content

The use of Wiltpruf® also did not have a significant effect on chlorophyll content. However, the pH and antitranspirant interaction showed a significant ( $P < 0.05$ ) difference for chlorophyll content. Chlorophyll content at pH 7 with the

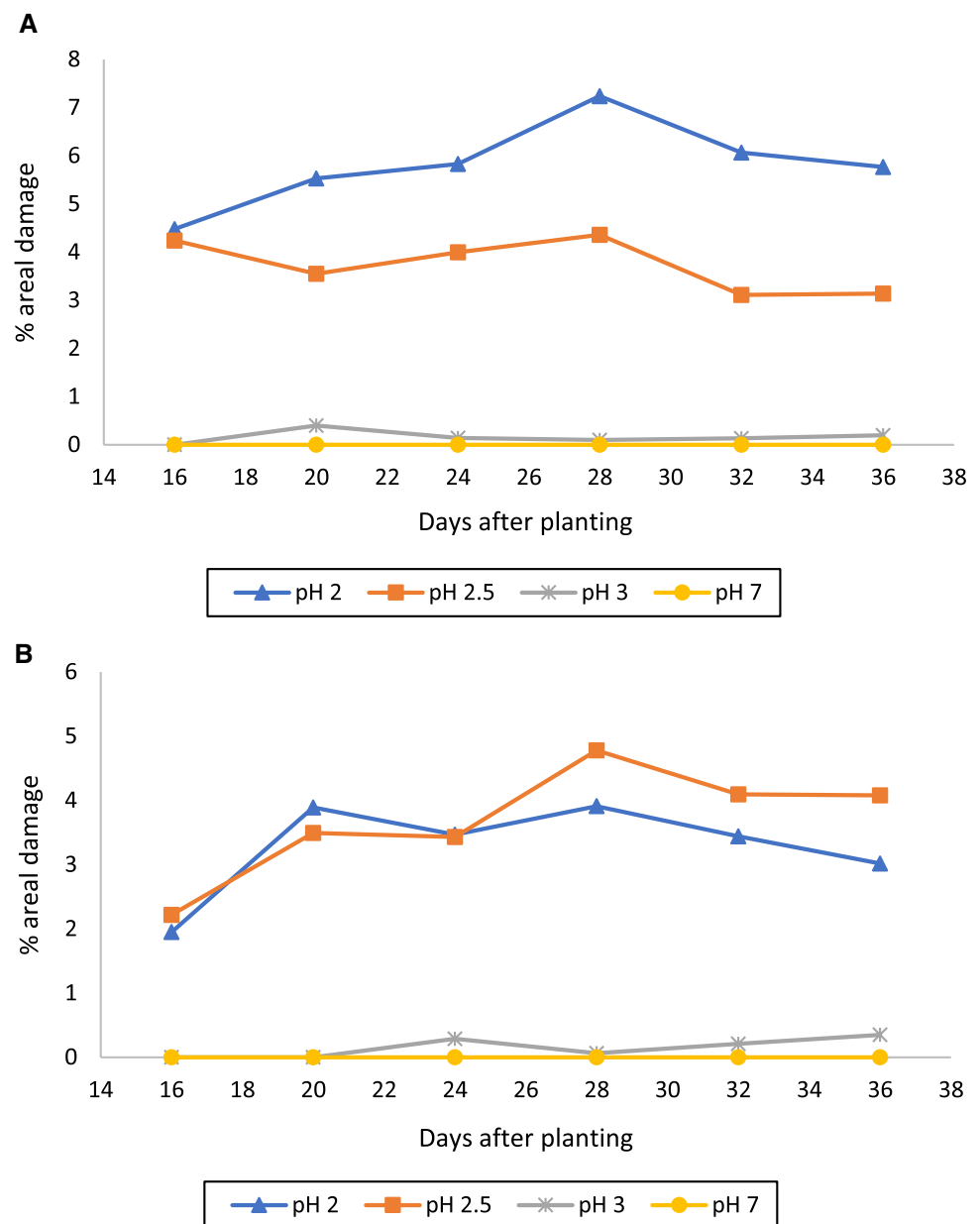
antitranspirant was significantly higher at 45.6 SPAD units, while at pH 2.5 with an antitranspirant it was lower at 40.4 SPAD units (Table 3). Data on dry biomass show that there was no significant effect of the antitranspirant on biomass across all pH treatments (Table 4).

## Discussion

### Response of Field Planted Crops to Foliar Wetting with Simulated AMD

Neither the chlorophyll content nor dry mass were significantly affected by foliar wetting with simulated AMD. Keevar and Jacobson (1983) made a similar observation after spraying soybeans with simulated acid rain, where they reported no effect on chlorophyll content and dry mass. It was noted in our trial that the foliar absorption rate may have been influenced by both the degree of cuticular development and by the quantity, chemical composition, and physical form of epicuticular waxes, which all vary with leaf maturity and species. This was not expected, as foliar wetting with acid waters is usually associated with chlorosis, scorching, and necrosis in plant leaves, which should lower chlorophyll content and dry mass. Contrary to our study, Odiyi and Eniola (2015) reported that plants that had been sprayed with simulated acid rain of pH 2.0 and 3.0 a week after emergence had a relative growth rate (RGR), chlorophyll content, and a harvest index that was significantly less ( $P < 0.05$ ) than the control of pH 7.0. In the present study, foliar spraying only began in the third week after crop emergence. At this point, the crops may already have developed some tolerance

**Fig. 6** Percent of wheat leaf area damaged by spraying foliage with synthetic acid mine waters of pH 2, 2.5, 3, and 7 in the presence (A) or absence (B) of the anti-transpirant at 16, 20, 24, 28, 32, and 36 days after planting



or resistance to acid injury, which would explain the lack of any significant differences between treatments.

### Glasshouse Leaf Scorching Trial

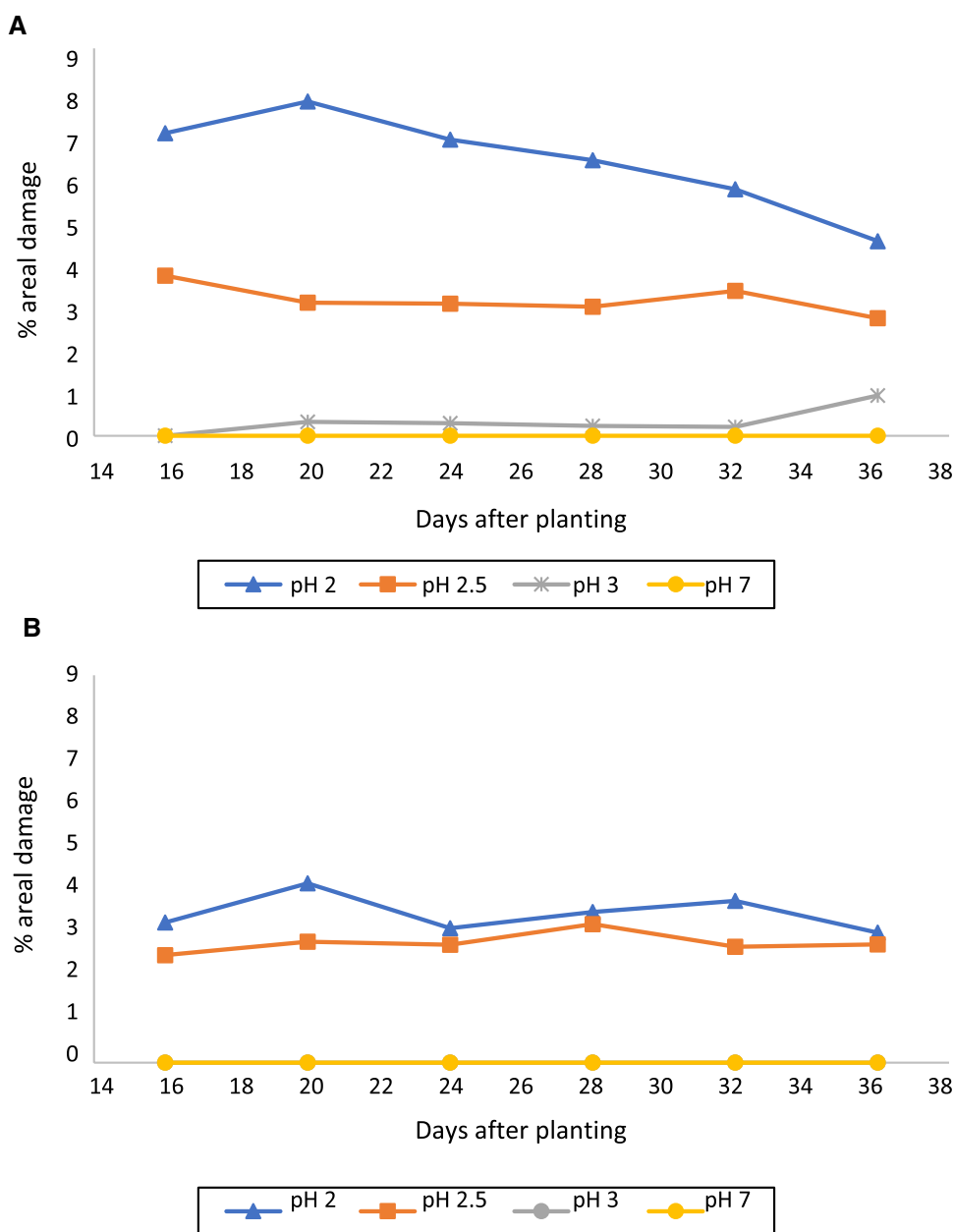
It was noted that foliar injury was concentrated on earlier formed leaves. However, the fraction of damaged leaves declined as plants grew older with time. Leaf injury began with the development of white lesions similar to those caused by sun-scorching. The undeveloped trifoliate leaves of the cowpeas and soybeans were not injured. The differences in the degree of injury among the different crops may be attributed to ease of wettability, rate of cuticular permeation, and resistance or tolerance of exposed leaves to altered

extracellular characteristics (Keever 1982). Leaf curling or cupping was evident in the soybeans, and in all crops except maize, white lesions as well as necrosis developed. Similar observations were made by Silva et al. (2005), who noted that the green colour of the leaves faded with increasing acidity.

Information on the physiological state of plants is normally provided by the chlorophyll content of the leaves (Pham et al. 2021). There was no significant reduction in chlorophyll content due to foliar application of sulphuric acid. These results, however, contradict those of other authors who reported up to 6.7% reduction in chlorophyll content when simulated acid rain was sprinkled on crops (Du et al. 2017; Keever and Jacobson 1983; Odiyi and Eniola



**Fig. 7** Percent of oat leaf area damaged by spraying foliage with synthetic acid mine waters of pH 2, 2.5, 3, and 7 in the presence (A) or absence (B) of the anti-transpirant at 16, 20, 24, 28, 32, and 36 days after planting



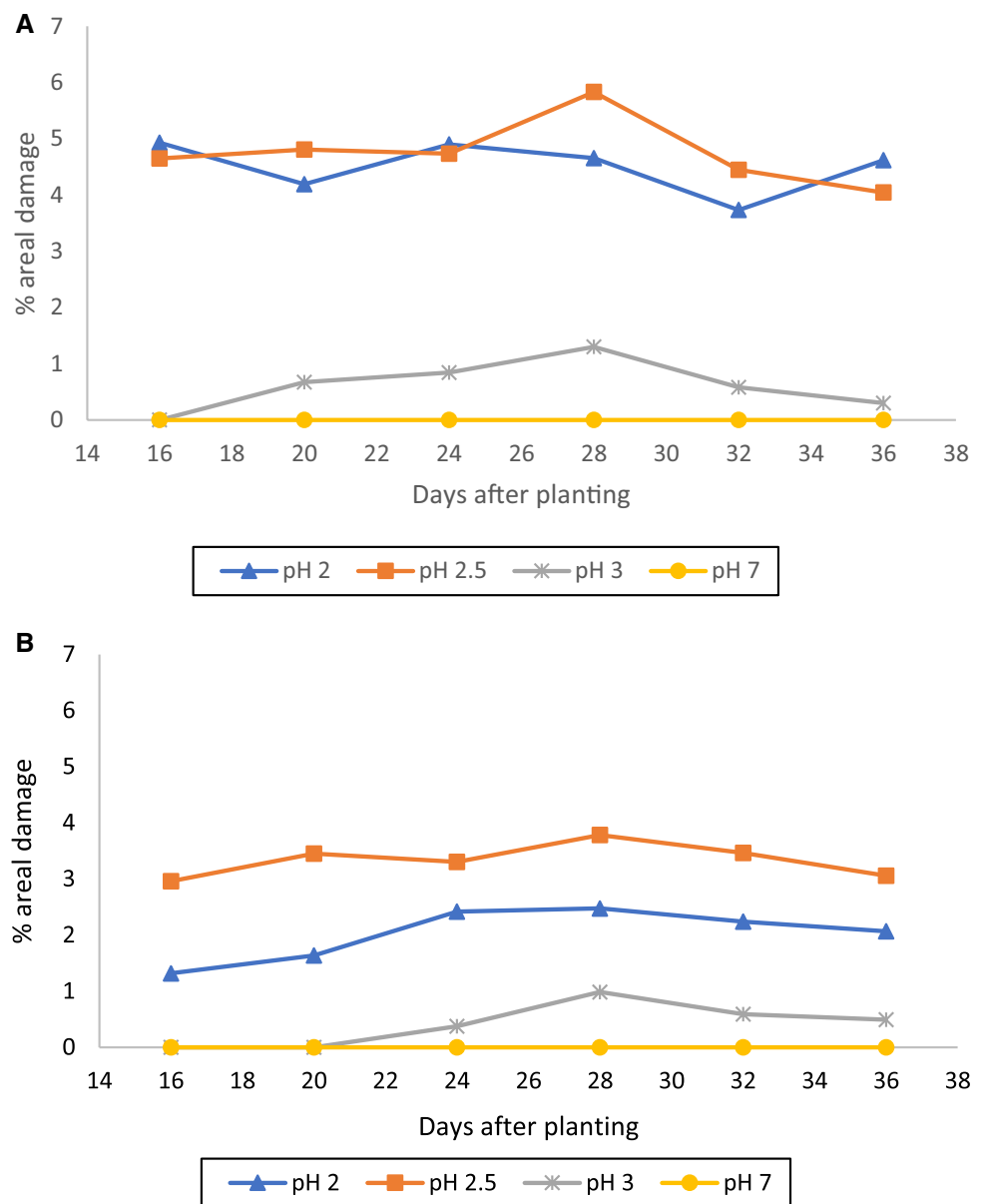
2015). These authors attributed the reduction in chlorophyll to scorching, which compromised the activity of the chlorophyll pigment in leaves consequently affecting biomass production. In this trial, only maize had its dry biomass adversely affected by the acidity. This is consistent with the findings of other authors (Keevar and Jacobson 1983; Lee et al. 1981). In a similar study, Keevar and Jacobson (1983) reported that varieties of soybean responded similarly to different levels of simulated acid rain synthesized with sulphuric acid. In their study, biomass increased from pH 5.6 to a maximum at pH 4.6 and decreased between pH 4.6 and 2.7 as acidity increased. The authors attributed the reductions in growth at pH 3.4 and 2.7 to the visible foliar injury

in those treatments. In the present trial, we believe that the foliar absorption rate was influenced by both the degree of cuticular development and by the quantity, chemical composition, and physical form of epicuticular waxes, which all vary with leaf maturity and with species.

### Antitranspirant Glasshouse Trial

Kohno (2017) found that plants displayed different acid sensitivities below pH 3.0 in terms of visible acute injury or growth and yield reduction. In our study, crop species responded differently to acid treatment and Wiltpruf® increased leaf scorching. It appears that the acid water was

**Fig. 8** Percent of lucerne leaf area damaged by spraying foliage with synthetic acid mine waters of pH 2, 2.5, 3, and 7 in the presence (A) or absence (B) of the anti-transpirant at 16, 20, 24, 28, 32, and 36 days after planting



able to erode the antitranspirant layer, making it less protective, but made leaf scorching worse. While we are not sure of the mechanism at play, it appears as if the acidic waters easily penetrated the antitranspirant layer. Percy and Barker (1987) made a similar observation and reported that the waxiest species they considered (rape), showed the highest damage when crops were sprinkled with simulated acid rain. Therefore, waxiness, either natural or artificial, may not always protect against foliar damage in some species. This is due to the physicochemical characteristics of the adaxial leaf surface that control wettability (Percy and Barker 1987). Droplets that land on a readily wetted surface with an amorphous wax coating are caught on initial impact and spread out quickly over the surface of the leaf

until the leaflet's water-holding capacity is reached and run-off occurs, often after a short period of time.

In this study, no scorching was found in field peas, which was probably due to a lack of pubescence on the leaf surface, which limits pooling of the acid waters on the leaf surface; a similar observation was made by Curry (1978).

Wiltpruf® did not affect chlorophyll content. However, Sagta and Nautiyal (2002) reported that antitranspirants reduced chlorophyll content in *Dalbergia* seedling leaves. Elfving et al. (1976) reported that chlorophyll was destroyed by acids, while the spongy mesophyll and palisade cells collapsed after their protoplasm disintegrated. In our trial, the number of collapsed epidermal cells in the leaves were apparently insufficient to affect chlorophyll content.

**Table 3** Chlorophyll content (SPAD units) for all crops sprayed with synthetic acid mine water of pH 2, 2.5, 3 and 7 in the presence or absence of the antitranspirant

Treatment		Crop				Average
pH level	Antitranspirant/No antitranspirant	Wheat	Oats	Peas	Lucerne	
2.0	Antitranspirant	40.5	49.9	38.3	47.4	44.0 <sup>a</sup>
2.5	Antitranspirant	41.7	43.3	37.0	39.5	40.4 <sup>a</sup>
3.0	Antitranspirant	42.8	49.8	36.1	43.4	43.0 <sup>a</sup>
7.0	Antitranspirant	44.6	52.8	36.6	48.2	45.6 <sup>b</sup>
Average		42.4	48.9	37.0	44.6	*
2.0	No antitranspirant	43.8	48.9	38.1	44.0	43.7
2.5	No antitranspirant	43.4	53.1	37.3	42.0	43.9
3.0	No antitranspirant	43.0	51.8	39.2	45.2	44.8
7.0	No antitranspirant	40.5	45.9	36.0	47.4	42.4
Average		42.7	49.9	37.7	44.6	ns

Means in columns followed by the same letters are not significantly different at 5% level of significance according to LSD test

\*Significant at 5% and *ns* not significant

**Table 4** Dry mass (g) per pot for all crops sprayed with synthetic acid mine water of pH 2, 2.5, 3, and 7 with presence or absence of the antitranspirant at all pH levels

Treatment		Crop				Average
pH level	Antitranspirant/No antitranspirant	Wheat	Oats	Peas	Lucerne	
2.0	Antitranspirant	5.9	4.8	4.8	5.0	5.1
2.5	Antitranspirant	5.8	4.5	5.3	4.5	5.0
3.0	Antitranspirant	5.7	4.7	4.6	5.1	5.0
7.0	Antitranspirant	5.3	4.1	5.2	4.4	4.8
Average		5.7a	4.5	5.0	4.8a	ns
2.0	No antitranspirant	6.2	3.9	4.3	5.6	5.0
2.5	No antitranspirant	8.3	4.8	4.5	4.4	5.5
3.0	No antitranspirant	7.8	4.3	6.0	6.3	6.1
7.0	No antitranspirant	6.6	4.1	4.6	7.3	5.7
Average		7.2b	4.3	4.9	5.9b	ns

Means in columns followed by the same letters are not significantly different at 5% level of significance according to LSD test, *ns* not significant

However, the wheat and lucerne biomass was significantly reduced by the antitranspirant. In a similar study, Davenport et al. (1974) reported that antitranspirants negatively affected the growth of snap beans, in contrast to the assertion that Wiltpruf® neither improves nor compromises crop growth rate. Antitranspirants like Wiltpruf® can reduce photosynthesis by forming a physical barrier on the leaves and reducing leaf water potential (Chalker-Scott 2015). Antitranspirants reduce leaf expansion and stem elongation within a short period of time. Mphande et al. (2020) reported that antitranspirants can reduce yield due to depression of transpiration and carbon dioxide exchange. Note that neither oats nor field pea biomass were negatively affected by the application of Wiltpruf® in the present study. This suggests that Wiltpruf® offers minimum resistance to the movement of gases, apart from water vapour (Davenport et al. 1974)

and that there was no decline in the cell metabolic activity after the application of Wiltpruf® (El-Sayed et al. 2013).

## Conclusion

The findings from this study suggest that leaf scorching with sulphuric acid solutions simulating AMD is likely to be minimal on most crops, even with high levels of acidity (pH 2). The acidic waters used in this study did not include acid-generating metal cations commonly found in AMD, and future studies should assess whether or not these elements need to be taken into account. Crops are slightly more sensitive in the seedling stage and there are differences in species susceptibility to leaf scorching after wetting with acidic waters. Treating crop seedlings with Wiltpruf® before foliar

wetting with acid mine drainage aggravated the incidence of leaf scorching; this practice is therefore not recommended. It is expected that greater challenges may be encountered in the rootzone of crops irrigated with untreated AMD, and hence it would be prudent to apply additional lime to the soil to neutralize the acidic irrigation water. It is also recommended that crops be planted on a wet profile and irrigated to facilitate emergence. Thereafter, if possible, the first post-emergence irrigation should be withheld until the crop can withstand foliage wetting with acidic irrigation water.

**Acknowledgements** We thank the Water Research Commission (WRC) of South Africa for their funding of this work (grant 2021/2023-00555).

**Data availability** The authors confirm that the data supporting the findings of this study are available within the article.

## References

- Aggag AM, Alzoheiry AM, Abdallah AE (2015) Effect of kaolin and fulvic acid antitranspirants on tomato plants grown under different water regimes. *Alex Sci Exch* 36(2):169–180. <https://doi.org/10.21608/ASEJAIQJSAE.2015.2875>
- Alheeti AAM, Farhan MA, Al-Saad LA, Theer RM (2021) Evaluation of the performance of imagej, leaf doctor applications, and visual assessments in measuring severity of two leaf spot diseases. *Earth Environ Sci* 761(1):12–30
- Chalker-Scott L (2015) The myth of antitranspirants. Puyallup Research and Extension Center. Washington State University, Washington
- Cinque MT (1979) Protecting fall plantings from the ravages of winter. Nassau County, NY, USA.
- Curry T (1978) histological study of the effects of acid rain on leaf tissue of *Pteridium aquilinum* and *Quercus palustris*. *Biol Soc Wash* 49(4):157–164. <https://doi.org/10.2307/4607495>
- Davenport DC, Uriu K, Hagan RM (1974) Effects of film antitranspirants on growth. *J Exp Bot* 25(2):410–419. <https://doi.org/10.1093/jxb/25.2.410>
- Du E, Dan D, Xuetong Z, Zhengzhong S, Xiaofei J, Wim V (2017) Direct effect of acid rain on leaf chlorophyll content of terrestrial plants in China. *Sci Total Environ* 605–606:764–769. <https://doi.org/10.1016/j.scitotenv.2017.06.044>
- Edje OT, Ossom EM (2009) Crop science handbook. Blue Moon Publishers, Manzini
- Elfving DC, Gilbert MD, Edgerton LJ, Wilde MH, Lisk DJ (1976) Antioxidant and antitranspirant protection of apple foliage against ozone injury. *Bull Environ Contam Toxicol* 15(3):336–341. <https://doi.org/10.1007/BF01812646>
- El-Sayed D, Tohamy M, Eisa G, El-Sarkassy N (2013) Effect of some antitranspirant substances on growth, yield and flag leaf structure of wheat plant (*Triticum aestivum* L.) grown under water stress conditions. *Zagazig J Agric Res* 40(2):215–230
- Guleria V, Shweta A (2020) Antitranspirants: an effective approach to mitigate the stress in field crops. *Int J Curr Microbiol Appl Sci* 9(5):1671–1678. <https://doi.org/10.20546/ijemas.2020.905.188>
- Jacobson JS, Heller LI, Yamada KE, Osmeloski JF, Bethard T (1989) Foliar injury and growth response of red spruce to sulfate and nitrate acidic mist. Environmental Biology Program. Boyce Thompson Institute for Plant Research, Ithaca
- Jovanovic NZ, Annandale JG, van der Westhuizen AM, Steyn JM (2004) Monitoring the effect of irrigation with gypsiferous mine wastewater on crop production potential as affected by soil water and salt balance. *J South Afr Inst Min Metall* 104:73–81
- Keever GJ (1982) Plant response to simulated acid rain with special reference to foliar injury, foliar leaching, trichome status and plant nutrition. United States of America. <https://www.osti.gov/biblio/6577719>. Accessed 24 May 2021
- Keever GJ, Jacobson JS (1983) Response of *Glycine max* (L.) Merrill to simulated acid rain II. Localization of foliar injury and growth response. *Field Crops Res* 6:251–259. [https://doi.org/10.1016/0378-4290\(83\)90065-5](https://doi.org/10.1016/0378-4290(83)90065-5)
- Kohn Y (2017) Effects of simulated acid rain on Asian crops and garden plants. *Air Pollution Impacts on Plants in East Asia*, Springer, p. 223–235
- Minolta K (2017) Chlorophyll meter SPAD-502Plus. Accessed 14 July 2021. [https://www5.konicaminolta.eu/fileadmin/content/eu/Measuring\\_Instruments/2\\_Products/1\\_Colour\\_Measurement/6\\_Chlorophyll\\_Meter/PDF/spad-502plus\\_Feb2017\\_EN.pdf](https://www5.konicaminolta.eu/fileadmin/content/eu/Measuring_Instruments/2_Products/1_Colour_Measurement/6_Chlorophyll_Meter/PDF/spad-502plus_Feb2017_EN.pdf)
- Kumari S, Chauhan J (2017) Antitranspirants and their role in agriculture. Accessed 1 June 2021. <https://www.biotecharticles.com/Agriculture-Article/Antitranspirants-and-their-Role-in-Agriculture-3991.html>
- Kumari S, Udayabhanu G, Prasad B (2010) Studies on environmental impact of acid mine drainage generation and its treatment: an appraisal. *Indian J Environ Prot* 30(11):953–967
- Lee JJ, Neely GE, Perrigan SC, Grothaus LC (1981) Effects of simulated sulfuric acid rain on yield, growth and foliar injury of several crops. *Environ Exp Bot* 21:171–185
- Madiseng L (2018) Crop response to irrigation with acidic and neutralised saline mine water. Dissertation, University of Pretoria.
- Mphande W, Kettlewell PS, Grove IG, Farrell AD (2020) The potential of antitranspirants in drought management of arable crops: a review. *Agric Water Manag* 236:106–143. <https://doi.org/10.1016/j.agwat.2020.106143>
- Odiyi BO, Eniola AO (2015) The effect of simulated acid rain on plant growth component of cowpea (*Vigna unguiculata*) L. Walps. *Jordan J Biol Sci* 1: 51–54. <https://doi.org/10.12816/0026948>
- Percy KE, Baker EA (1987) Effects of simulated acid rain on production, morphology and composition of epicuticular wax and on cuticular membrane development. *New Phytol* 107: 577–589. <http://www.jstor.org/stable/2434444>
- Pham HT, Nguyen AT, Do ATN, Hens L (2021) Impacts of simulated acid rain on the growth and the yield of soybean (*Glycine max* (L.) Merr.) in the mountains of Northern Vietnam. *Sustainability* 13:4980
- R Core Team (2013) R: a language and environment for statistical computing. R Foundation for Statistical Computing, Vienna, Austria
- Rodríguez-Sánchez VM, Rosas U, Calva-Vásquez G, Sandoval-Zapota E (2020) Does acid rain alter the leaf anatomy and photosynthetic pigments in urban trees? *Plants* 9:862–872. <https://doi.org/10.3390/plants9070862>
- Sagta HC, Nautiyal S (2002) Effect of water stress and antitranspirants on chlorophyll contents of *Dalbergia sissoo* Roxb leaves. *Indian for* 128(8):893–902
- Sant’Anna-Santos BF, Silva LCD, Azevedo AA, Aguiar R (2006) Effects of simulated acid rain on leaf anatomy and micromorphology of *Genipa americana* L. (*Rubiaceae*). *Braz Arch Biol Technol* 49:313–321
- Schneider CA, Rasband WS, Eliceiri KW (2012) NIH image to image J: 25 years of image analysis. *Nat Methods* 9(7):671–675
- Shepherd T, Griffiths TD (2006) The effects of stress on plant cuticular waxes. *New Phytol* 171:469–99. <https://doi.org/10.1111/j.1469-8137.2006.01826.x>
- Shi Z, Zhang J, Xiao Z, Lu T, Ren X, Wei H (2021) Effects of acid rain on plant growth: a meta-analysis. *J Environ Manage* 297:113213
- Silva LC, Azevedo AA, Silva EAM, Oliva MA (2005) Effects of simulated acid rain on the growth of five Brazilian tree species and

- anatomy of the most sensitive species. *Aust J Bot* 53:789–796. <https://doi.org/10.1071/BT040960067-1924/05/080789>
- Soil Classification Working Group (1991) Soil classification: a taxonomic system for South Africa. Dept of Agricultural Development, Pretoria
- Sun J, Hu H, Li Y, Wang L, Zhou Q, Huang X (2016) Effects and mechanism of acid rain on plant chloroplast ATP synthase. *Environ Sci Pollut Res* 23(18):18296–18306
- Windish B (2016) Antitranspirants: everything you wanted to know about protecting your plants during cold weather. Fairway Green Inc, Hillsborough

Springer Nature or its licensor (e.g. a society or other partner) holds exclusive rights to this article under a publishing agreement with the author(s) or other rightsholder(s); author self-archiving of the accepted manuscript version of this article is solely governed by the terms of such publishing agreement and applicable law.